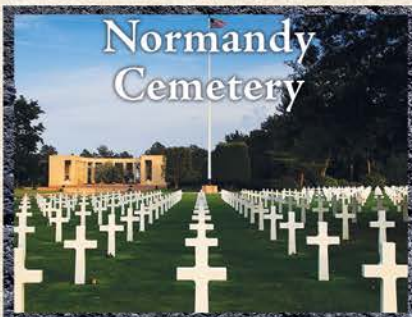


Join Dr. Don & Karyn Wilton for a 13-Day Footsteps of our Faith



England, France & Spain April 3 -15 , 2025



All-inclusive from Charlotte, NC

Escorted by Gospel Soloist
Jonathan Wilburn & wife Sandra

The Tour Price Includes:

- * Roundtrip Airfare from Charlotte, NC
- * 4 Nights Deluxe Hotel Accommodations
- * 7-night Cruise on the Sky Princess
- * Three meals Daily (B/L/D)
- * Gratuities (Hotels & Restaurants)
- * Entrance Fees
- * Tips (Driver & Guide)
- * Personal Listening Device
- * Professional Tour Guide
- * Deluxe Air-Conditioned Coach
- * Backpack, Travel Kit & Tour Book



Onboard Princess Cruise Line's
Sky Princess

TTI Templeton Tours Inc.
1-800-334-2630
www.templeton tours.com

Dr. Don Wilton, a seminary professor and pastor for over 44 years, and the author of *Saturday's With Billy* - a personal account of his relationship with Billy Graham - will be your host and teacher during this unforgettable journey.

DAY 1 - Thursday, April 3 Today we Meet at our international departure airport to depart for our overnight flight to London. We will enjoy a delicious dinner high above the Atlantic.

DAY 2 - Friday, April 4 On arrival at Heathrow International Airport we will be met by our local representative. We will then transfer to an idyllic English village for lunch. After some free time, we will travel to our hotel - outside London - for a night of rest after our long flight. (L, D)

DAY 3 - Saturday, April 5

This morning we depart for Southampton, England to board the Sky Princess, our home for the next 7-nights. This afternoon we set sail for Spain. (B/L/D)



DAY 4 - Sunday, April 6 Today is a day at sea where we can rest, relax, and enjoy the offerings of our world-class luxury cruise liner as we make our way South. Tonight we will have a Bible Study together on the life of the Disciple James. (B/L/D)

DAY 5 - Monday, April 7

Following arrival in La Coruna, we will meet onshore to board our private motor coach and travel to Santiago de Compostela, the capital of Galicia and home to the final resting place of the Disciple James. Along the way we might glimpse pilgrims making their way along the el Camino, an ancient walking trail used by Christians from all over Europe to atone for their sins and visit the tomb of St. James. (B/L/D)



Following arrival in La Coruna, we will meet onshore to board our private motor coach and travel to Santiago de Compostela, the capital of Galicia and home to the final resting place of the Disciple James. Along the way we might glimpse pilgrims making their way

DAY 6 - Tuesday, April 8 This morning we arrive in Bilbao, Spain. The day is yours to explore the beautiful city. You can wander through the historic streets of Casco Viejo, viewing the architectural wonders, or take a leisurely stroll in Plaza Nueva, a vibrant square teeming with local life and surrounded by inviting eateries. A notable site in Bilbao is the magnificent Bilbao Cathedral. (B/L/D)



DAY 7 - Wednesday, April 9

Today we call on the port of Le Verdon, France, near the bustling, yet quaint, city of Bordeaux. While here, you can choose to explore the historic streets, view the illustrious Bordeaux Cathedral, or relax by the world's largest reflecting pool, Miroir d'Eau. (B/L/D)



DAY 8 - Thursday, April 10 Today is a day at sea where we can rest, relax, and enjoy the offerings of our world-class luxury cruise liner as we continue South. Tonight Dr. Wilton will lead us in a Bible study. (B/L/D)

DAY 9 - Friday, April 11 This morning, we will arrive at the port of Cherbourg, France. From here we will take a bus ride to Omaha Beach and the Normandy Cemetery, reflecting on the sacrifices made for our country during World War II. (B/L/D)



DAY 10 - Saturday, April 12 This morning we arrive back into England at Southampton to head to London. We will then embark on a journey into history. Century after century will



unfold as our qualified local guide tours us around London. Our first site is Wesley's Chapel, opened in 1778 and was built under the direction of John Wesley, the founder of the Methodist movement. We will then proceed to Bunhill Cemetery where John Bunyan, Isaac Watts, John Gill and Susanna Wesley are all buried. Our last sight of the day is St. Paul's Cathedral. This grandiose cathedral has sat at the highest point in London for just over 300 years. Our evening ends with dinner and overnight at our hotel in London. (B/L/D)

DAY 11 - Sunday, April 13 This morning we start the day with a visit to the Tower of London to view the famous Crown Jewels. Our next site is Westminster Abbey, once a monastery, now an active church and the Coronation place for English monarchs for over 900 years. While there, we will learn



about historic events in the Jerusalem Chamber where 17 men translated the first third of the King James Version of the Old Testament and the last half of the New Testament. We then return to the hotel for dinner this evening. (B/L/D)

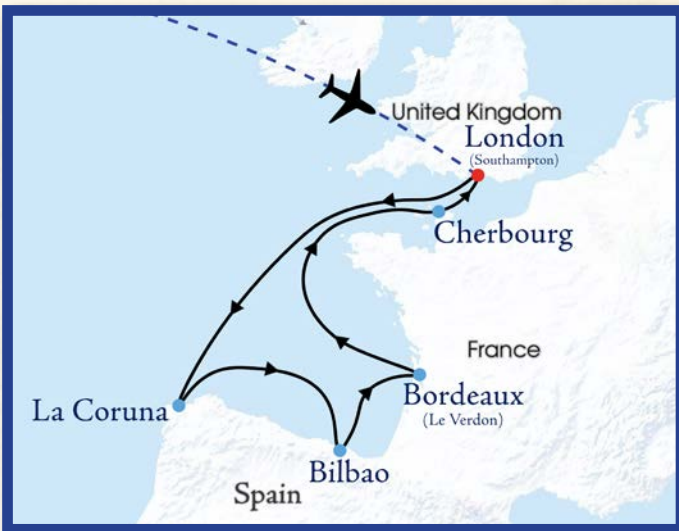
DAY 12 - Monday, April 14 Following breakfast at our hotel, we will drive by Hyde Park, seeing the "Speakers' Corner," where speeches and demonstrations have been held since the mid 1800s. Next, we will get a chance to view the changing of the guard at the renowned Buckingham Palace. After a delicious lunch, we will visit the Metropolitan Tabernacle, where the great Baptist preacher Charles Spurgeon held great revival meetings. It was here that he preached



to as many as 6,000 people every Sunday. It is estimated that during his lifetime he preached to an estimated 10 million people. Our last site will be the Hampton Court Palace, where in 1604, James I commissioned the King James Version of the Bible during the Hampton Court Conference. You will have time to stroll through the beautiful gardens and explore the famous hedge maze. Our evening will end with a farewell dinner at our hotel. (B/L/D)



DAY 13 - Tuesday, April 15 We come to the end of our tour in which we have followed in the footsteps of men and women of God. As you prepare to return home, allow yourself to be challenged and uplifted as you remember what God has done through the forefathers of the faith (B).



Tour Itinerary

DAY	DATE	PORT	ARRIVE	DEPART
Thu	Apr 3	Depart Charlotte, NC	-----	6:25pm
Fri	Apr 4	Arrive London, England	7:30am	
Sat	Apr 5	Transfer to Southampton via Winchester		
Sat	Apr 5	Depart London - Board Ship		4:00pm
Sun	Apr 6	Cruising		
Mon	Apr 7	La Coruna, Spain	7:00am	4:00pm
Tue	Apr 8	Bilbao, Spain	8:00am	6:00pm
Wed	Apr 9	Le Verdon, France	7:00am	6:00pm
Thu	Apr 10	Cruising		
Fri	Apr 11	Cherbourg, France	8:00am	6:00pm
Sat	Apr 12	Southampton, England	7:00am	
Sat	Apr 12	Tour London		
Sun	Apr 13	Tour London		
Mon	Apr 14	Tour London		
Tue	Apr 15	Depart London		9:15am
Tue	Apr 15	Arrive Charlotte, NC	1:00pm	

*Ports of call are subject to change.

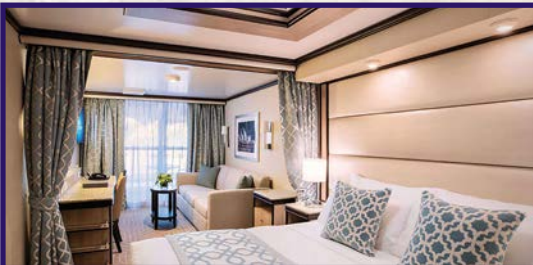
Sky Princess

Ship Specs

Capacity:	3,660 passengers
Tonnage:	141,000 gross tons
Length:	1,083 ft
Beam:	126 ft
Decks:	19
Speed:	23 knots
Year Built:	2019
Specialty Restaurants:	5

Sample Staterooms

Mini-Suite (MC)



Balcony (DB, DC, BB, BC, BD)



Interior (ID)



Category	Description	Price (per person)
MINI-SUITES		
MC	Mini-Suite: King bed (Two twin beds), floor-ceiling sliding doors with a private verandah, couch, bathroom with shower. Forward & Midship locations on decks 8, 15, & 16 (245 sq. ft., Balcony 40 sq. ft.)	\$8,495
BALCONY STATEROOMS		
DB	Deluxe Balcony: King bed (Two twin beds), floor-ceiling sliding doors with a private verandah, couch, bathroom with shower. Midship locations on decks 9-14 (195 sq. ft., Balcony 40 sq. ft.)	\$8,295
DC	Deluxe Balcony: King bed (Two twin beds), floor-ceiling sliding doors with a private verandah, couch, bathroom with shower. Midship locations on decks 15, 16 (195 sq. ft., Balcony 40 sq. ft.)	\$8,095
BB	Balcony: King bed (Two twin beds), floor-ceiling sliding doors with a private verandah, couch, bathroom with shower. Midship locations on decks 9-14 (180 sq. ft., Balcony 40 sq. ft.)	\$7,895
BC	Balcony: King bed (Two twin beds), floor-ceiling sliding doors with a private verandah, couch, bathroom with shower. Midship locations on decks 15-17 (180 sq. ft., Balcony 40 sq. ft.)	\$7,795
BD	Balcony: King bed (Two twin beds), floor-ceiling sliding doors with a private verandah, couch, bathroom with shower. Aft locations on decks 9-14 (180 sq. ft., Balcony 40 sq. ft.)	\$7,695
INSIDE STATEROOMS		
ID	Interior: King bed (Two twin beds). Aft locations on decks 10-14 (175 sqft.)	\$7,495
Pricing above is based on two passengers sharing a cabin, each paying the full category price. All staterooms include a television, telephone, private bathroom, shower, vanity and hair-dryer. All lower beds are convertible to a single king-size bed. Pricing for accommodations to include third and fourth passengers are available upon request. Single passengers requesting a private cabin will be charged 150% of the tour price.		

PLEASE NOTE: Specific cabin assignments within the category selected are at the discretion of Princess Cruise Lines. Private Teaching Sessions, Custom Shore Excursions, and Reserved Dining for this group are only available to passengers who register through Templeton Tours Inc.

General Conditions

DEPOSITS AND PAYMENTS: A deposit of \$300.00 per person is required to reserve space on the tour. An additional payment of \$1000.00 per person is due November 29, 2024. The final payment is due no less than 60 days prior to the departure date of the tour (January 14, 2025). Deposits may be made by personal check, money order, or credit card (Visa/MC/Discover). Credit card payments beyond the initial deposit will be accepted for an additional 3% non-refundable fee.

CANCELLATIONS AND REFUNDS: If a passenger cancels his/her tour membership there will be a cancellation fee of one hundred twenty-five dollars (\$125.00) per person up until 91 days before departure. For cancellations 90-74 days before departure the cancellation fee will be \$300.00 per person. For cancellations 74-57 days before departure the cancellation fee will be 75% of the tour cost. There will be no refund for cancellations within 56 days of departure, no-shows, or partially completed tours. All cancellation requests must be addressed to Templeton Tours in writing. Trip cancellation insurance is recommended.

COVID-19 PROTOCOLS: There are presently no COVID requirements for visiting Europe. Registered passengers will be notified of any changes to the COVID protocols.

FARE INCLUSIVE: Roundtrip air transportation from Charlotte, NC (CLT). Five (5) nights hotel accommodations in London. Seven (7) nights onboard a cruise ship. All meals while overnighting in London, and meals customarily served on overseas flights and on the cruise ship. Sightseeing in London, La Coruna, & Cherbourg. Tips to guides, motorcoach drivers, hotel porters, and restaurant staff (i.e., maitre d', table waiter, etc.) are also included. The brochure price is per person in US dollars based on two passengers sharing a cabin.

TOUR ITINERARY SUBJECT TO CHANGE: TEMPLETON TOURS, INC. intends to adhere to the published itinerary; however, circumstances may necessitate changes, including changes without advance notice during the tour. TEMPLETON TOURS, INC. reserves the right to change the itinerary if unforeseen circumstances beyond our control force a change.

TOUR CANCELLATION: TEMPLETON TOURS, INC. reserves the right to cancel or withdraw the tour at any time. In the event of a cancellation deemed necessary by TEMPLETON TOURS, INC., the sole and exclusive responsibility of TEMPLETON TOURS is to refund all monies recovered.

NOT INCLUDED: Airfare from cities other than Charlotte, NC (CLT); passport costs, visa fees (if any), EU Visitor fees, and health documentation costs (when required); food and beverages (including coffee and tea) not usually included with the table d'hote meals; optional sightseeing tours and excursions; accident and baggage insurance; transporting and handling excess luggage; tips to persons rendering special personal services; items of a purely personal nature such as laundry, telephone, and room service orders, etc.; transportation between the home city and the international departure city.

AIR ROUTINGS: The brochure price includes IATA jet economy class transportation from the international departure city applicable on all IATA and ARC carriers, based on the 6/45 day Apex fare. TEMPLETON TOURS, INC. reserves the right to choose the air carrier, routing, and departure time for each passenger. Airfares used are based on contracted group fares and are highly restrictive. Payments for and restrictions on airline tickets are governed by the applicable fare. Cancellation fees levied by the airlines are applicable if you cancel or change your air ticket for any reason after purchase. Ticketing must be completed 90 days prior to departure. Group fares do not permit deviations; passengers who wish to deviate may arrange their own airfare. An airline credit of \$995 per person will be given to those passengers who arrange their own airfare. Passengers planning to arrange their own air transportation must notify TEMPLETON TOURS, INC. in writing on or before December 20, 2024. Seat numbers will be assigned by the airline at check-in; specific seat requests cannot be guaranteed. Passengers are responsible for providing frequent flyer information upon check-in.

ACCOMMODATIONS: Tour prices are per person, based on two full-paying passengers per cabin. Specific cabins will be assigned by the cruise line. Single rooms are subject to availability at 150% of the tour cost. Tour participants without a roommate will be charged a single supplement.

PASSAGE CONTRACT: The attention of the passengers is specifically directed to the conditions of transportation set forth in the passage contract of the ticket of The Cruise Line. The Cruise Line reserves the right to alter the itinerary or substitute vessels if deemed necessary.

BAGGAGE: You may check one (1) piece of luggage whose overall dimensions do not exceed 62 inches (length + width + height) and whose weight does not exceed fifty (50) pounds. Each passenger may also bring one (1) piece of carry-on luggage. These regulations may change without notice so please read the monthly correspondence you will receive from TEMPLETON TOURS for the most current information. Under no circumstances may dangerous articles such as firearms, explosives, oxygen, or combustible substances be contained in any baggage. Medications, valuables, passports, and a change of clothing should be packed in your carry-on bag.

DISABILITIES: TEMPLETON TOURS, INC. reserves the right to refuse passage to someone who is in such physical or mental condition as to be unfit for travel or who may require care and attention beyond that which the tour guide and tour host can provide. The tour requires a substantial amount of walking and many of the sites visited are not accessible by wheelchair.

INSURANCE: Acting only as agents for suppliers, TEMPLETON TOURS is not responsible for damage, loss, or theft of luggage and/or personal belongings, or for personal injury, accident, illness and/or death as a result of any occurrences or conditions beyond its control, including, but not limited to, defects in vehicles, breakdown in equipment, strikes, terrorist attacks, hostage situations, kidnappings, hijackings, protests, riots, public demonstrations, or theft. For your protection, it is important that you have adequate insurance to cover these possibilities. Additional information and application forms for all types of coverage will be supplied you prior to departure.

IDENTIFICATION: All passengers must present a valid passport that does not expire before **October 15, 2025**. All non-US citizens should contact their respective embassies for applicable regulations.

PRICE CHANGES: Tour conditions and airfares are subject to Governmental, IATA, ARC, and airline regulations in effect at the date of and during the tour. All rates are quoted in US dollars and are based on tariffs and costs in effect, and are subject to change without notice. Taxes and fuel surcharges are included in your tour cost and are subject to change without notice. Templeton Tours reserves the right to pass along additional fuel surcharges or taxes imposed by the airlines or The Cruise Line.

DISCLAIMER: Cruise transportation of passengers and their baggage is governed by the terms and conditions printed on the Passenger Ticket Contract. Responsibility for The Cruise Lines does not extend beyond the vessel. TEMPLETON TOURS and The Cruise Line expressly disclaim any responsibility for personal injury or property damage arising out of the acts or negligence of any air carrier, hotel, or any person rendering any of the services offered in addition to the ship's cruise and shall not be responsible for any damage or inconvenience caused by late air, car, or motorcoach arrivals nor for loss or damage to baggage or other property of the passenger occurring off the vessel. Loss or damage to baggage must be reported to the responsible airline, land carrier, or ship personnel prior to leaving the area of responsibility. All claims must be made in writing to the appropriate carrier. The Cruise Line nor TEMPLETON TOURS will not be responsible for any damage or loss which is not duly reported. By virtue of your signature on the registration form below, you agree that TEMPLETON TOURS shall not be liable for any accident, loss, injury, death, or damage of any kind to you or to those traveling with you. Airlines concerned are not to be held responsible for any act, omission or event during the time you are not on board the aircraft. The passenger contract in use by the airline, when issued, constitutes the sole agreement between it and you. By virtue of your signature on the registration form below you acknowledge and assume all risks associated with this trip and agree that TEMPLETON TOURS assumes no liability of any kind and hereby expressly waive any and all possible claims against TEMPLETON TOURS, INC., Dr. Don Wilton, or Jonathan Wilburn.

For additional information, please call Templeton Tours at 1-800-334-2630 or online at www.templetontours.com

Complete and mail to: TEMPLETON TOURS, INC. PO BOX 2630 BOONE, NC 28607

Tour# 50403

Dr. Don Wilton FOOTSTEPS OF OUR FAITH Registration Form - April 3 - 15, 2025

I would like to reserve a cabin in category : _____ for the Footsteps of Faith Tour with Dr. Don Wilton from Charlotte, NC.

Enclosed is my deposit in the amount of \$300.00 per person by check or money order. Enclosed is my credit card as deposit.

For an additional fee, please arrange my air transportation from my local airport of: _____ (city/state).

Single Passenger-Choose one: Single Occupant - 150% supplement or Please assign me a roommate.

Name _____ Name as it appears on your Passport Date of Birth ____ / ____ / ____ Nametag Name: _____

Name _____ Name as it appears on your Passport Date of Birth ____ / ____ / ____ Nametag Name: _____

Address _____ City _____ State _____ Zip _____

Cell (_____) _____ Home (_____) _____ Email _____

My roommate(s) : _____ (If sending in a separate registration form)

Emergency Contact: Name: _____ Home (_____) _____ Work (_____) _____

I have read and agree to the Tour Conditions as stated above. _____ (Signature)

Credit card payments will be accepted for the \$300 per person deposit. Additional payments will be subject to a 3% fee.

Credit Card # _____ Exp. Date ____ / ____ CSC _____ Name on Card _____
(Master Card, VISA, or Discover) (month/year) (security code on back)

I agree to the conditions as stated above and authorize TTI to charge my credit card. _____
Signature