

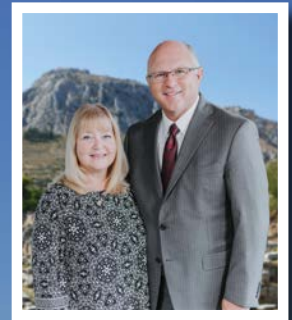
JOIN DR. & MRS. PAUL CHAPPELL ON A 16-DAY TOUR
REVISITING SITES OF THE

Save
the
Date

JOURNEYS OF PAUL

GREECE, ITALY & TURKEY

JUNE 17 - JULY 2, 2025



DR. & MRS. PAUL
CHAPPELL

The tour price includes:

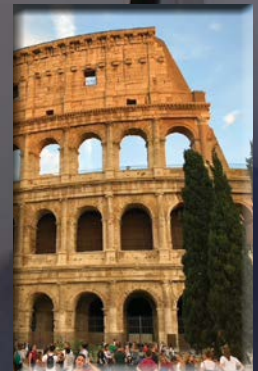
- Round Trip Airfare from Los Angeles, CA
- 10-Night Cruise on The Majestic Princess
- 2 Nights Hotel Accommodations in Athens
- Full Day Touring of Athens & Corinth
- Half-Day Excursion of Ephesus, Rhodes, Valletta, & Pompeii
- 2 Nights Hotel Accommodations in Rome
- Full Day Touring of Rome
- Breakfast, Lunch, & Dinner
- Airport-Hotel-Ship Transfers
- Port Taxes & Gratuities
- Bible Studies



Athens



Ephesus



Rome

travel arrangements by:

TTI TEMPLETON TOURS INC.
"The Leader in Christian Travel"
1-800-334-2630 www.templeton tours.com

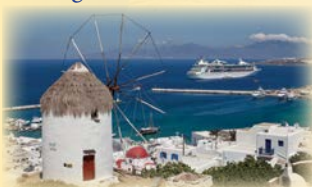
Join Dr. Paul Chappell on this once-in-a-lifetime tour revisiting sites of the Apostle Paul's missionary journeys. Dr. Chappell will be your host and Bible teacher for this unforgettable journey.

Our adventure starts with a flight from Los Angeles to Athens, Greece. Upon arrival in Athens, we will transfer to our hotel for dinner and a night of rest.

Thursday morning after breakfast, we begin exploring Athens, the birthplace of civilization. We will begin with a visit to the Acropolis and Parthenon. Nearby we will visit Mars Hill, where Paul addressed the Athenians. (Acts 17:22-34) While there, Dr. Chappell will teach about the "unknown god." We will also see the Ancient Agora, Tower of the Winds, Herodes Atticus Theater, the Theater of Dionysus, and the Temple of Zeus while in Athens. After lunch there will be time for shopping in the old Plaka district.



Friday morning we will take a bus from Athens to visit nearby Corinth. Here we will view the remains of the ancient city of Corinth to include: the ruins of the Temple of Apollo, the site of the Olympic stadium, and the famous Bema, also known as the judgement seat. At this site Paul defended himself before proconsul, Gallio. (Acts 18:12). After our time in Corinth, we will head back to Athens to the port of Piraeus to board The Majestic Princess, our home for the next ten-nights.



The first stop of our cruise will be the island of Mykonos. There you may choose to shop, take pictures, or enjoy a relaxing stroll through the whitewashed houses of this iconic Greek fishing harbor.

The next morning we will call on the Turkish port of Kusadasi. A short drive brings us to the ancient city of Ephesus, the greatest city in Asia Minor during the Roman Empire and home to one of the Seven Churches (Revelation 2-3). Ephesus was the largest city the Apostle Paul visited, and the city where he confronted the followers of Diana (Acts 19:28). Just outside Ephesus we will visit the Basilica of St. John, erected over the Disciple John's grave by the Emperor Justinian.



On Monday we dock in the beautiful port of Rhodes, Greece. This enchanting site, the most important of the three great cities of ancient times, is guarded by medieval walls constructed by the Knights of St. John in the 13th century. There we will travel by bus along the eastern coastline to the city of Lindos. From the Acropolis there are breathtaking views of the great expanse of the Aegean Sea, and St. Paul's Bay where the Apostle Paul cast anchor during his historic voyage to Ephesus. If you wish, you may climb the Great Staircase to the Temple of Athena.



Tuesday morning we will arrive at Santorini, the crown jewel of the Aegean. A cable car ride to the mountaintop city of Thira is provided. The day is yours to explore the many art galleries and shops or relax over a cup of coffee as you gaze over the scenic bay below.



On Wednesday morning our ship docks at the island of Crete, where we will travel by bus from the beautiful port city of Heraklion to Agioi Deka to view the Tomb of the Martyrs and the ruins of the Basilica of St. Titus. We return to Heraklion in the early afternoon in time to enjoy a stroll through the city streets or some shopping. This evening Dr. Chappell will conduct a Bible study to dive deeper into the Apostle Paul's journeys.



Thursday is a day at sea enjoying the modern luxuries found onboard our ship as we sail the Mediterranean. Dr. Chappell will lead a bible study, giving us a closer look at what Scripture has to say about the Apostle Paul.

On Friday, we call on the capital city of Malta, Valletta. Paul was shipwrecked on the coast of Malta while being taken to Rome to be tried as a political rebel. It is believed that Malta's 2000 year history of Christianity was first brought to the island by the Apostle Paul around 60 A.D. While in Malta we will take a short bus ride across the island to visit the site of St. Paul's Grotto, where tradition holds the Apostle Paul took refuge.



Saturday is a day at sea enjoying the modern luxuries found onboard the Majestic Princess as we sail the Mediterranean.



Sunday the ship calls on Naples, Italy, the port of the once thriving and sophisticated Roman city of Pompeii. Here we will step back in time to get a glimpse of everyday life in the ancient world. We will take a guided tour of this famous city that lies at the foot of Mt. Vesuvius. Following dinner onboard, Dr. Chappell will lead us in a bible study to prepare us for our arrival to Rome.

Monday morning we will disembark in Civitavecchia and travel by bus to the Eternal City of Rome. Here we will visit: The Colosseum, the Arch of Titus, and the Roman Forum. We will then pause for a time of worship near the ruins of the Mamertine Prison, where it is said that Paul was imprisoned for his beliefs. After lunch we will drive by Circus Maximus and Piazza Venezia, the monument of Vittorio Emanuele, before visiting the 2,000-year-old Pantheon. Our day will conclude with a visit to the Spanish Steps and the Trevi Fountain. On Tuesday morning, we will visit Vatican City, St. Peter's Basilica, and the Sistine Chapel. After lunch, we will visit the cathedral of St. Paul Outside the Walls, the location of Paul's final resting place.



Wednesday morning, we depart our hotel in Rome for the return flight home, having witnessed marvelous and historic wonders of our Christian faith.



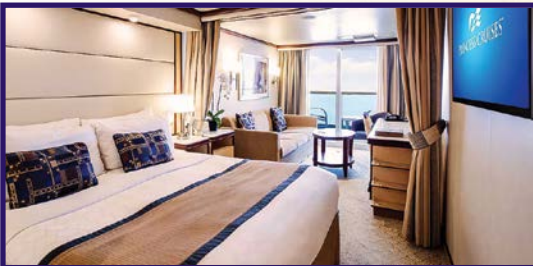


Majestic Princess Ship Specs

Capacity:	3,560 passengers
Tonnage:	143,700 gross tons
Length:	1,083 ft
Beam:	126 ft
Decks:	19
Speed:	22 knots
Year Built:	2017
Specialty Restaurants:	5

Sample Staterooms

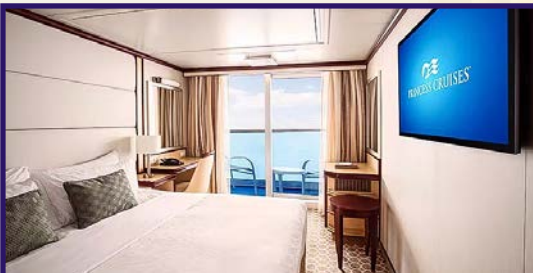
Mini-Suite (MB, MC)



Deluxe Balcony (DB, DD)



Balcony (BB, BC, BD)



Tour Itinerary

DAY	DATE	PORT	ARRIVE	DEPART
Tue	Jun 17	Depart USA	-----	TBA
Wed	Jun 18	Arrive Athens, Greece	TBA	
Thu	Jun 19	Tour & Overnight in Athens		
Fri	Jun 20	Tour Athens - Depart		7:00pm
Sat	Jun 21	Mykonos, Greece	7:00am	10:00pm
Sun	Jun 22	Ephesus, Turkey	8:00am	6:00pm
Mon	Jun 23	Rhodes, Greece	8:00am	6:00pm
Tue	Jun 24	Santorini, Greece	7:00am	10:00pm
Wed	Jun 25	Heraklion, Crete	8:00am	6:00pm
Thu	Jun 26	Cruising		
Fri	Jun 27	Valletta, Malta	8:00am	6:00pm
Sat	Jun 28	Cruising		
Sun	Jun 29	Naples, Italy	7:00am	7:00pm
Mon	Jun 30	Rome, Italy	6:00am	
Mon	Jun 30	Tour & Overnight in Rome		
Tue	Jul 1	Tour & Overnight in Rome		
Wed	Jul 2	Depart Rome for USA		TBA

*Ports of call are subject to change.

Category

Description

Price (per person)

Category	Description	Price (per person)
MINI-SUITES		
MB	Mini-Suite: King bed (Two twin beds), floor-ceiling sliding doors with a private verandah, couch, bathroom with shower. Midship locations on decks 10-15 (245 sq. ft., Balcony 40 sq. ft.)	TBA
MC	Mini-Suite: King bed (Two twin beds), floor-ceiling sliding doors with a private verandah, couch, bathroom with shower. Forward & Midship locations on decks 15 & 16 (245 sq. ft., Balcony 40 sq. ft.)	TBA
BALCONY STATEROOMS		
DB	Deluxe Balcony: King bed (Two twin beds), floor-ceiling sliding doors with a private verandah, couch, bathroom with shower. Midship locations on decks 9-14 (195 sq. ft., Balcony 40 sq. ft.)	TBA
DD	Deluxe Balcony: King bed (Two twin beds), floor-ceiling sliding doors with a private verandah, couch, bathroom with shower. Midship locations on decks 10-14 (195 sq. ft., Balcony 40 sq. ft.)	TBA
BB	Balcony: King bed (Two twin beds), floor-ceiling sliding doors with a private verandah, couch, bathroom with shower. Midship locations on decks 9-15 (180 sq. ft., Balcony 40 sq. ft.)	TBA
BC	Balcony: King bed (Two twin beds), floor-ceiling sliding doors with a private verandah, couch, bathroom with shower. Midship locations on decks 15 & 16 (180 sq. ft., Balcony 40 sq. ft.)	TBA
BD	Balcony: King bed (Two twin beds), floor-ceiling sliding doors with a private verandah, couch, bathroom with shower. Aft locations on decks 9-14 (180 sq. ft., Balcony 40 sq. ft.)	TBA

Pricing above is based on two passengers sharing a cabin, each paying the full category price. All staterooms include a television, telephone, private bathroom, shower, vanity and hair-dryer. All lower beds are convertible to a single king-size bed.

Pricing for accommodations to include third and fourth passengers are available upon request.

Single passengers requesting a private cabin will be charged 150% of the tour price.

PLEASE NOTE: Specific cabin assignments within the category selected are at the discretion of Princess Cruise Lines. Private Teaching Sessions, Custom Shore Excursions, and Reserved Dining for this group are only available to passengers who register through Templeton Tours Inc.

GENERAL CONDITIONS

DEPOSITS AND PAYMENTS: A deposit of **\$300.00** per person is required to reserve space on the tour. The deposit is fully refundable up until two weeks following written notification of the tour price. An additional payment of **\$1000.00** per person is due **January 8, 2025**. The final payment is due **March 5, 2025**. Deposits may be made by personal check, money order, or credit card (Visa/MC/Discover). Credit card payments beyond the initial deposit will be accepted for an additional 3% non-refundable fee.

CANCELLATIONS AND REFUNDS: If a passenger cancels his/her tour membership there will be a cancellation fee of one hundred twenty-five dollars (\$125.00) per person up until 91 days before departure. For cancellations 90-74 days before departure the cancellation fee will be \$300.00 per person. For cancellations 74-57 days before departure the cancellation fee will be 75% of the tour cost. There will be no refund for cancellations within 56 days of departure, no-shows, or partially completed tours. All cancellation requests must be addressed to Templeton Tours in writing. Trip cancellation insurance is recommended.

COVID-19 PROTOCOLS: There are presently no COVID requirements for visiting Europe. Registered passengers will be notified of any changes to the COVID protocols.

FARE INCLUSIVE: Roundtrip air transportation from Los Angeles, CA (LAX). Two (2) nights hotel accommodations in Athens & Rome. Ten (10) nights onboard a cruise ship. All meals while overnighting in Athens & Rome, and meals customarily served on overseas flights and on the cruise ship. Sightseeing in Athens, Corinth, Ephesus, Naples, Rhodes, Heraklion and Rome. Tips to guides, motorcoach drivers, hotel porters, and restaurant staff (i.e., maitre d', table waiter, etc.) are also included. The brochure price is per person in US dollars based on two passengers sharing a cabin.

TOUR ITINERARY SUBJECT TO CHANGE: TEMPLETON TOURS, INC. intends to adhere to the published itinerary; however, circumstances may necessitate changes, including changes without advance notice during the tour. TEMPLETON TOURS, INC. reserves the right to change the itinerary if unforeseen circumstances beyond our control force a change.

TOUR CANCELLATION: TEMPLETON TOURS, INC. reserves the right to cancel or withdraw the tour at any time. In the event of a cancellation deemed necessary by TEMPLETON TOURS, INC., the sole and exclusive responsibility of TEMPLETON TOURS is to refund all monies recovered.

NOT INCLUDED: Airfare from cities other than Los Angeles, CA (LAX); passport costs, visa fees (if any), EU Visitor fees, and health documentation costs (when required); food and beverages (including coffee and tea) not usually included with the table d'hote meals; optional sightseeing tours and excursions; accident and baggage insurance; transporting and handling excess luggage; tips to persons rendering special personal services; items of a purely personal nature such as laundry, telephone, and room service orders, etc.; transportation between the home city and the international departure city.

AIR ROUTINGS: The brochure price includes IATA jet economy class transportation from the international departure city applicable on all IATA and ARC carriers, based on the 6/45 day Apex fare. TEMPLETON TOURS, INC. reserves the right to choose the air carrier, routing, and departure time for each passenger. Airfares used are based on contracted group fares and are highly restrictive. Payments for and restrictions on airline tickets are governed by the applicable fare. Cancellation fees levied by the airlines are applicable if you cancel or change your air ticket for any reason after purchase. Ticketing must be completed 90 days prior to departure. Group fares do not permit deviations; passengers who wish to deviate may arrange their own airfare. An airline credit TBA per person will be given to those passengers who arrange their own airfare. Passengers planning to arrange their own air transportation must notify TEMPLETON TOURS, INC. in writing on or before **March 5, 2025**. Seat numbers will be assigned by the airline at check-in; specific seat requests cannot be guaranteed. Passengers are responsible for providing frequent flyer information upon check-in.

ACCOMMODATIONS: Tour prices are per person, based on two full-paying passengers per cabin. Specific cabins will be assigned by the cruise line. Single rooms are subject to availability at 150% of the tour cost. Tour participants without a roommate will be charged a single supplement.

PASSAGE CONTRACT: The attention of the passengers is specifically directed to the conditions of transportation set forth in the passage contract of the ticket of The Cruise Line. The Cruise Line reserves the right to alter the itinerary or substitute vessels if deemed necessary.

BAGGAGE: You may check one (1) piece of luggage whose overall dimensions do not exceed 62 inches (length + width + height) and whose weight does not exceed fifty (50) pounds. Each passenger may also bring one (1) piece of carry-on luggage. These regulations may change without notice so please read the monthly correspondence you will receive from TEMPLETON TOURS for the most current information. Under no circumstances may dangerous articles such as firearms, explosives, oxygen, or combustible substances be contained in any baggage. Medications, valuables, passports, and a change of clothing should be packed in your carry-on bag.

DISABILITIES: TEMPLETON TOURS, INC. reserves the right to refuse passage to someone who is in such physical or mental condition as to be unfit for travel or who may require care and attention beyond that which the tour guide and tour host can provide. The tour requires a substantial amount of walking and many of the sites visited are not accessible by wheelchair.

INSURANCE: Acting only as agents for suppliers, TEMPLETON TOURS is not responsible for damage, loss, or theft of luggage and/or personal belongings, or for personal injury, accident, illness and/or death as a result of any occurrences or conditions beyond its control, including, but not limited to, defects in vehicles, breakdown in equipment, strikes, terrorist attacks, hostage situations, kidnappings, hijackings, protests, riots, public demonstrations, or theft. For your protection, it is important that you have adequate insurance to cover these possibilities. Additional information and application forms for all types of coverage will be supplied you prior to departure.

IDENTIFICATION: All passengers must present a valid passport that does not expire before **January 2, 2026**. All non-US citizens should contact their respective embassies for applicable regulations.

PRICE CHANGES: Tour conditions and airfares are subject to Governmental, IATA, ARC, and airline regulations in effect at the date of and during the tour. All rates are quoted in US dollars and are based on tariffs and costs in effect, and are subject to change without notice. Taxes and fuel surcharges are included in your tour cost and are subject to change without notice. Templeton Tours reserves the right to pass along additional fuel surcharges or taxes imposed by the airlines or The Cruise Line.

DISCLAIMER: Cruise transportation of passengers and their baggage is governed by the terms and conditions printed on the Passenger Ticket Contract. Responsibility for The Cruise Lines does not extend beyond the vessel. TEMPLETON TOURS and The Cruise Line expressly disclaim any responsibility for personal injury or property damage arising out of the acts or negligence of any air carrier, hotel, or any person rendering any of the services offered in addition to the ship's cruise and shall not be responsible for any damage or inconvenience caused by late air, car, or motorcoach arrivals nor for loss or damage to baggage or other property of the passenger occurring off the vessel. Loss or damage to baggage must be reported to the responsible airline, land carrier, or ship personnel prior to leaving the area of responsibility. All claims must be made in writing to the appropriate carrier. The Cruise Line nor TEMPLETON TOURS will not be responsible for any damage or loss which is not duly reported. By virtue of your signature on the registration form below, you agree that TEMPLETON TOURS shall not be liable for any accident, loss, injury, death, or damage of any kind to you or to those traveling with you. Airlines concerned are not to be held responsible for any act, omission or event during the time you are not on board the aircraft. The passenger contract in use by the airline, when issued, constitutes the sole agreement between it and you. By virtue of your signature on the registration form below you acknowledge and assume all risks associated with this trip and agree that TEMPLETON TOURS assumes no liability of any kind and hereby expressly waive any and all possible claims against TEMPLETON TOURS, INC., Dr. Paul Chappell, or Lancaster Baptist Church.

For additional information, please call Templeton Tours at 1-800-334-2630 or online at www.templetonstours.com

Complete and mail to: TEMPLETON TOURS, INC. PO BOX 2630 BOONE, NC 28607

Tour# 50617

DR. PAUL CHAPPELL JOURNEYS OF PAUL Pre-Registration Form - June 17 - July 2, 2025

I would like to reserve a cabin in category : _____ for the Journeys of Paul Tour with Dr. Paul Chappell from Los Angeles, CA.

Enclosed is my deposit in the amount of \$300.00 per person by check or money order. Enclosed is my credit card as deposit.

For an additional fee, please arrange my air transportation from my local airport of: _____ (city/state).

Single Passenger-Choose one: Single Occupant - 150% supplement or Please assign me a roommate.

Name _____ Name as it appears on your Passport Date of Birth ____ / ____ / ____ Nametag Name: _____

Name _____ Name as it appears on your Passport Date of Birth ____ / ____ / ____ Nametag Name: _____

Address _____ City _____ State _____ Zip _____

Cell (_____) _____ Home (_____) _____ Email _____

My roommate(s) : _____ (If sending in a separate registration form)

Emergency Contact: Name: _____ Home (_____) _____ Work (_____) _____

I have read and agree to the Tour Conditions as stated above. _____ (Signature)

Credit card payments will be accepted for the \$300 per person deposit. Additional payments will be subject to a 3% fee.

Credit Card # _____ Exp. Date ____ / ____ CSC _____ Name on Card _____
(Master Card, VISA, or Discover) (month/year) (security code on back)

I agree to the conditions as stated above and authorize TTI to charge my credit card. _____

Signature